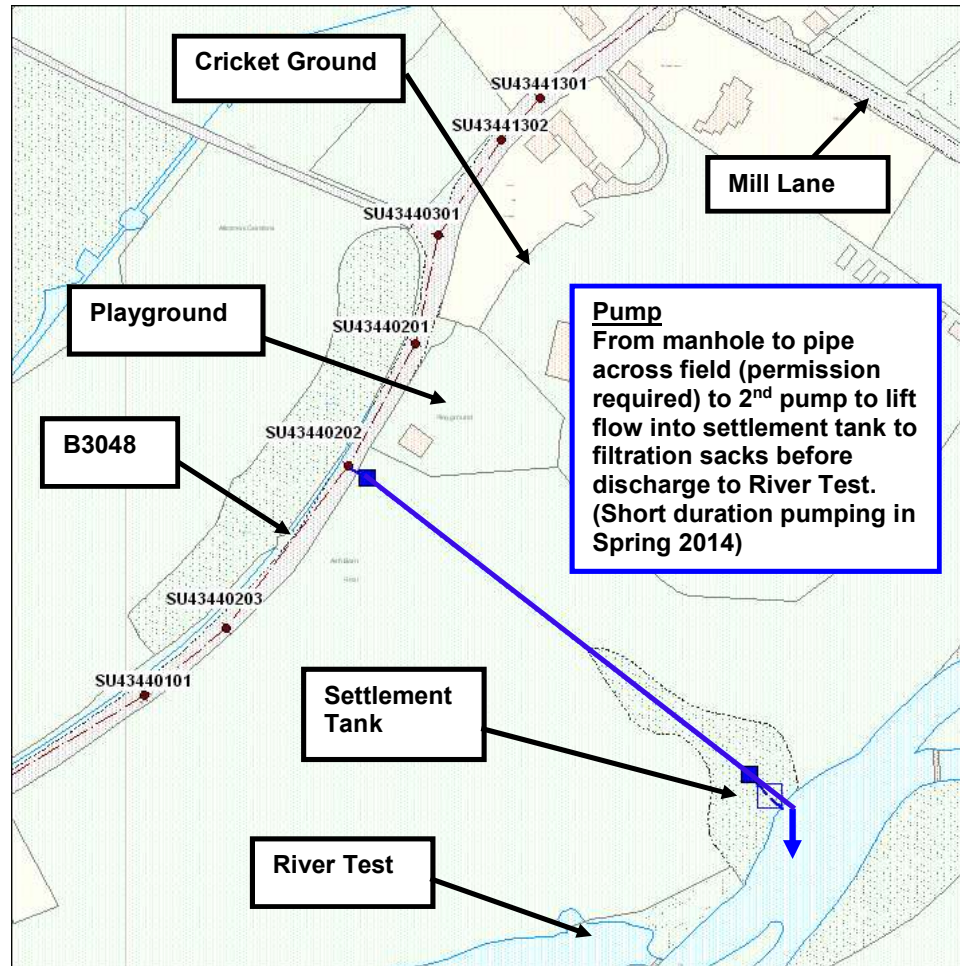


APPENDIX B

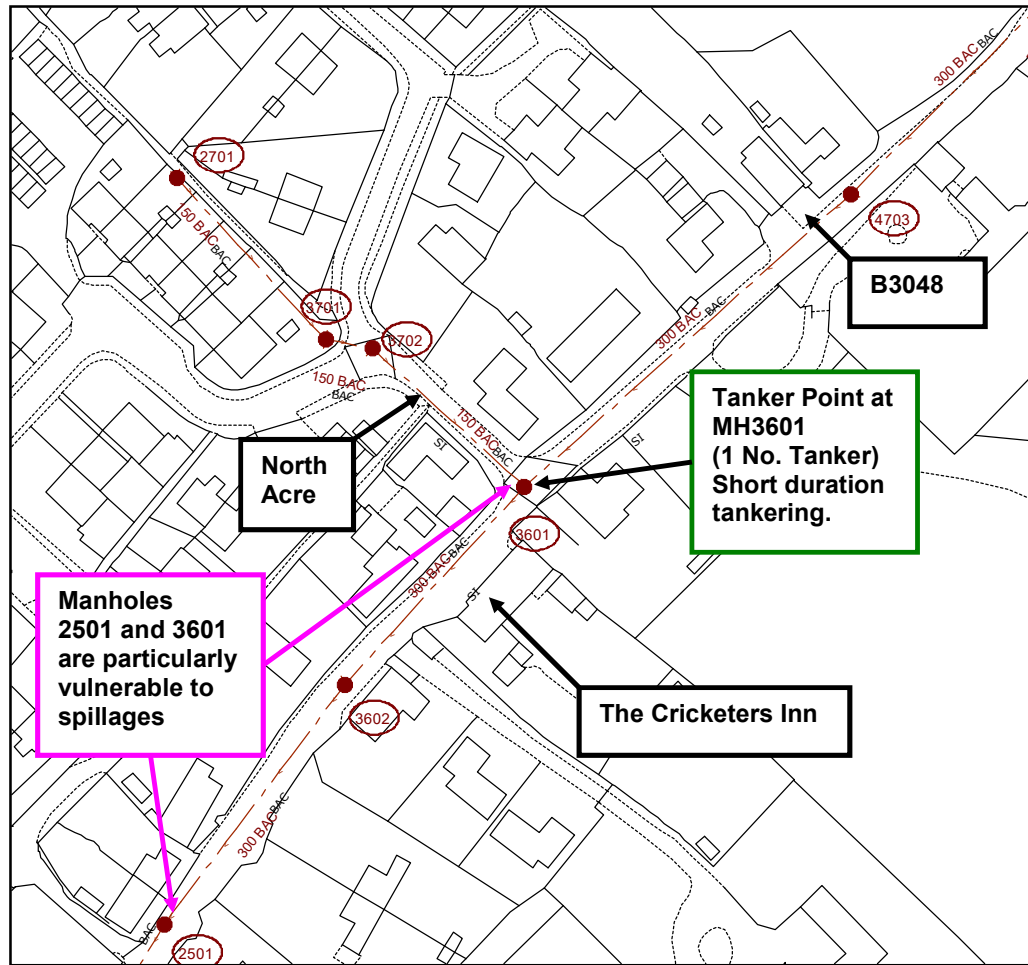
Emergency Discharge Sites

See notes in Section 4.1 regarding the potential need to modify / augment over-pumping sites to deal with future flood events. Over-pumping sites will be selected to provide the most effective arrangements to maintain services, whilst minimising environmental effects. Where practical, sites that have been used previously are expected to be re-used (when necessary), but the use of different locations cannot be ruled out, if hydraulic conditions dictate.

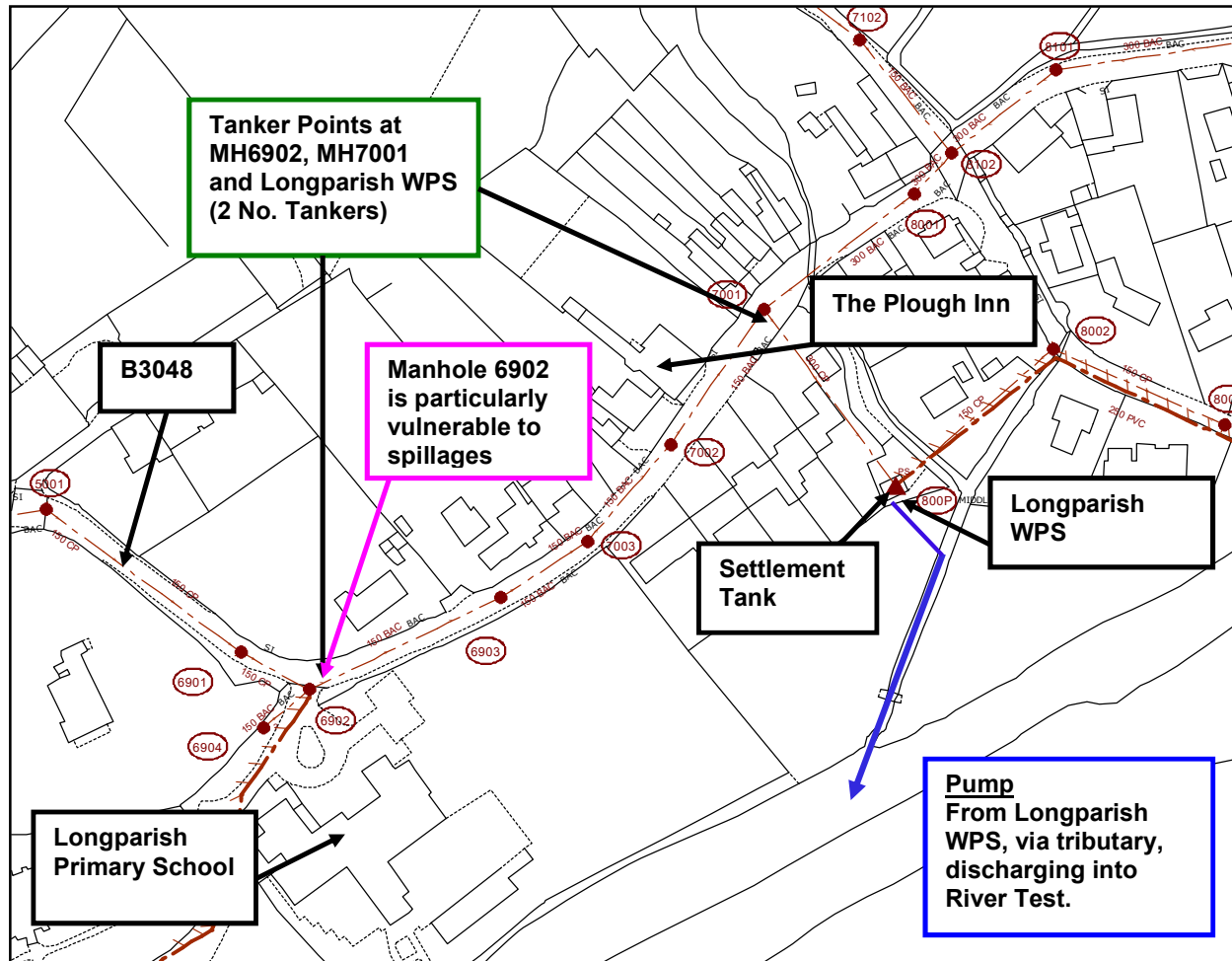
Longparish, Hampshire - Overpumping and Tankering Sites (Plan 1 of 2)



Longparish, Hampshire - Overpumping and Tankering Sites (Plan 2 of 2)



Longparish, Hampshire – Proposed Over-pumping and Tankering Site for Future Use



Timing for Deployment of Tankers and Overpumps in previous winters

Location	Tankering			Overpumping		
	Start Date	Stop Date	Typical Number of Tankers	Start Date	Stop Date	Typical Number of Pumps
Longparish	January 2014	31/03/14	1 tanker (occasionally two tankers)	10/03/14 (intermittent operation)	Pumps switched off on 26/03/14. Pump not running for several days prior to 26/03/14. Pumps off-hired on 01/04/14.	2 pumps in series at 1 site

Neither tankering or over-pumping were required in 2019/20 or 2020/21.